

REFERENCES

INFRASTRUCTURE BUILDINGS



INNOVATION AND TRADITION



Building and Planning (Infrastructures)

Pulp and Paper Mill

PORTUGAL Setúbal



PORTUCEL (Pulp and Paper Company of Portugal)



Designation

Revamping and Expansion of the Setúbal Pulp and Paper Mill for a production of 400.000 t/year.



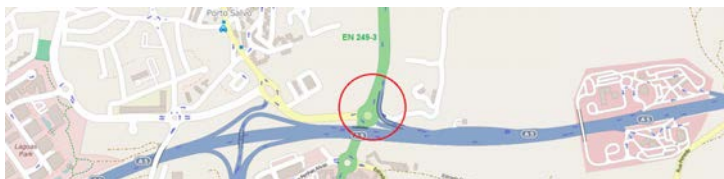
Services Provided

Detail design of the infrastructures (earth-works; roads; drinkable water, fire fighting and irrigation networks; rainy and urban waste water networks; gas, energy and communications networks; public lighting).

1209

Renovations on the Road EN 249/3

PORTUGAL Oeiras



City Hall of Oeiras



Designation

Arrangement of the road EN249/3 nearby the Oeiras interchange in the Estoril motor way.



Services Provided

Detail design of the route layout and viaduct.

1225

National Hospital Simão Mendes in Bissau

GUINEA-BISSAU Bissau



Government of the Republic of Guinea-Bissau



Designation

Rehabilitation of the Simão Mendes National Hospital at Bissau - Intervention area: 3,4 ha.



Services Provided

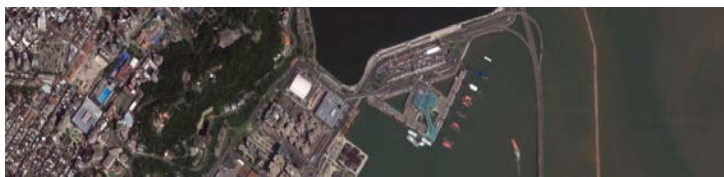
Detail design of the infrastructures (roads; water and sewerage networks; public lighting).

1224

Building and Planning (Infrastructures)

New Sea Passengers Terminal at the Outer Harbour

MACAU - CHINA Macau



Macau Government



Designation

New sea passengers terminal at the outer harbour - Landscaping - Intervention area: 9,6 ha.



Services Provided

Detail design of infrastructures (earth-works; dredging; earth fills in mud areas; roads; water supply, sewerage and electricity networks).

1222

New Head Office

PORTUGAL Linda-a-Velha



NESTLÉ Portugal, SA



Designation

New Head Office - Intervention area: 2,5 ha.



Services Provided

Detail design of the infrastructures (earth-works; water, sewerage and gas networks; sewerage disengagement).

1221

Building Reg. Metrology Laboratory and Reg. Directorate Energy and Indus

PORTUGAL Alfragide



IPQ (Portuguese Institute for Quality)



Designation

Regional Laboratory of Metrology and building of the Lisbon Regional Directorate of Industry and Energy - Intervention area: 1,0 ha.



Services Provided

Detail design of the infrastructures (earth-works; roads; water, sewerage and lighting networks).

1220

Building and Planning (Infrastructures)

Car Factory Ford/Volkswagen

PORTUGAL Palmela



Autoeuropa



AUTOEUROPA (Automobiles)



Designation

FORD/VW Car Factory - Intervention area: 110 ha.



Services Provided

Detail design of the infrastructures (earth-works; roads; rainy, domestic and industrial waste water networks, including pre-treatment; fluids network; electrical, telecommunications, data transmission and "security and safety" networks; public lighting).

1219

Pego Coal Fired Power Plant

PORTUGAL Abrantes



EDP (Electricity Company of Portugal)



Designation

Pego Coal Fired Power Plant (4x300 MVA) - Intervention area: 180 ha.



Services Provided

Detail design of the infra-structures (roads; rainy and domestic waste water networks; technical galleries and gutters; MT and LT electrical cables).

1218

Arquiparque in Miraflores

PORTUGAL Miraflores - Algés



MULTIDOIS - Sociedade Imobiliária, SA



Designation

Arquiparque in Miraflores - Intervention area: 3,2 há.



Services Provided

Detail design of infra-structures (earth-works; rainy and domestic waste water networks; water supply network; public lighting).

1217

Building and Planning (Infrastructures)

Stretch of Road in Oeiras

PORTUGAL Oeiras



City Hall of Oeiras

Designation

Road Stretch between the Town Council Square and the cemetery (0,7 km).



Services Provided

Detail design (earthworks; pavement; drainage; signalling; security; lighting).



1215

Industrial Estate

PORTUGAL Arganil



City Hall of Arganil

Designation

Industrial Estate (8,8 ha).



Services Provided

Detail design (earth-works; roads; rainy and domestic waste water networks; drinkable and industrial water and fire fighting networks; electrical network; sewerage treatment plant).



1214

Garcia de Orta Hospital

PORTUGAL Almada



Ministry of Health (D.G.I.E.S.)

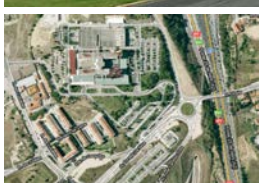
Designation

Garcia de Orta Hospital - Intervention area: 10,7 há.



Services Provided

Detail design of the infrastructures (earth-works; roads; drinkable water, fire fighting and irrigation networks; sewerage network; landscaping).



1213

Building and Planning (Infrastructures)

Area of Landfill of Outer Harbour - ZAPE

MACAU - CHINA Macau



Macau Government



Designation

Area of landfill of outer harbour - ZAPE



Services Provided

Control, monitoring and advising on all construction work for infrastructure (water, sewer, urban roadworks and electricity) landfills and their emissaries Sewage

574

Infrastructures of the Sá Carneiro Airport

PORTUGAL Porto



ANA - Aeroportos de Portugal

ANA - Airports in Portugal



Designation

Infrastructures of the Sá Carneiro airport



Services Provided

Implementation project, stormwater networks, waste water, sewerage and sewage treatment plant.

1210

Tomar Professional Training Centre

PORTUGAL Tomar



Institute of Employment and Professional Training



Designation

Tomar Professional Centre - Intervention area: 2,2 ha.



Services Provided

Detail design of infrastructures (earth-works; roads; drinkable water, fire fighting and irrigation networks; domestic and rainy waste water networks; gas, energy and communications networks; public lighting).

1228

Building and Planning (Infrastructures)

Pharmaceutical Laboratory

PORTUGAL Cacém



SOFARIMEX
SOFARIMEX

Designation

Pharmaceutical Laboratory - Intervention area: 2,8 ha.

Services Provided

Detail design of the infrastructures (earth-works; roads; drinkable water, fire fighting and irrigation networks; rainy and urban waste water networks; gas, energy and communications networks; public lighting).

1208

Dairy Products Plant

PORTUGAL Vale de Cambra



Lacto Lusa, S A (Dairy Company)

Designation

Dairy Products Plant - Intervention area: 3,7 ha.

Services Provided

Detail design (earth-works; roads; water impounding; drinkable water, fire fighting and irrigation networks; rainy and urban waste water networks; electrical energy; public lighting; landscaping).

1207

The Campus of Gualtar, in Braga

PORTUGAL Braga



UNIVERSIDADE DO MINHO
University of Minho

Designation

Braga Campus - Intervention area : 10,5 ha.

Services Provided

Detail design (earth-works; roads; drinkable water, fire fighting and irrigation networks; rainy and urban waste water networks; gas and telecommunications networks; public lighting; landscaping).

1204

Building and Planning (Infrastructures)

Polytechnic Institute of Viana do Castelo

PORTUGAL Viana do Castelo



Polytechnic Institute of Viana do Castelo



Designation

Technical and management High School - Intervention area: 7,0 ha .



Services Provided

Detail design of the infrastructures (earth-works; roads; drinkable water, fire fighting and irrigation networks; rainy and urban waste water networks; gas, energy and communications networks; public lighting).

1201

NAPE Infrastructures

MACAU - CHINA Macau



Macau Gouvernement



Designation

NAPE infrastructures.



Services Provided

Civil & E & M Design.

1198

School of Technology of Setúbal

PORTUGAL Setúbal



Ministry of Education



Designation

School of Technology of Setúbal - Draft implementation of infrastructure (earthworks, roads, drinking water networks, irrigation and fire, sewer and storm waste, gas networks, power and communications, outdoor lighting).



Services Provided

Detail design of the infrastructures (earth-works; roads; drinkable water, fire fighting and irrigation networks; rainy and urban waste water networks; gas, energy and communications networks; public lighting; gas storage and network).

1197

Building and Planning (Infrastructures)

Industrial Complex

PORTUGAL Águas de Moura



Designation

Industrial Complex (milk pasteurisation and sterilisation plant).

Services Provided

Detail design of the infrastructures (roads; water and sewage networks; waste water treatment plant).



1196

Bus Depot

PORTUGAL Algés



CCFL - (current CARRIS)

Designation

Miraflores Bus Depot: general workshops and service station - Intervention area: 11,5 ha.

Services Provided

Detail design of the infrastructures (earth-works; roads; water and sewage networks; lighting).



1195

Stº André New Town

PORTUGAL Sines



GAS Gabinete da Área Sines (Office Area Sines)

Designation

Stº André New Town (1,168 dwellings and 3 schools) - Intervention area: 40 ha.

Services Provided

Detail design of the infrastructures (roads; water, sewage, medium tension and lighting networks).



1194

Building and Planning (Infrastructures)

Eduardo Mondlane University

MOZAMBIQUE Maputo



University of Eduardo Mondlane



Designation

University "Campus" - Intervention area: 100 ha.



Services Provided

Detail design of the infrastructures (earth-works; roads; drinkable water; fire fighting and irrigation networks; rainy and urban waste water networks; gas, energy and communications networks; public lighting).

1193

Reorganization of the Bay area of Praia Grande - road network

MACAU - CHINA Macau



Sociedade de Empreendimentos NAM VAN, SARL



Designation

Reorganization of the Bay area of Praia Grande - road network.



Services Provided

Detailed design (structures, technical galleries, electrical installations, technical management, HVAC, fire network, water and sewerage networks).

717

Tractor Factory

PORTUGAL Montijo



 **Valmet**

VALMET Tractors (Portugal), S A



Designation

Tractors Plant - Intervention area: 7,0 ha.



Services Provided

Detail design (earth-works; roads; drinkable water and fire fighting networks; rainy and domestic waste water networks; electrical energy and public lighting; communications; gas storage and network).

1212

Building and Planning (Infrastructures)

Border Post of Ilha Verde

MACAU - CHINA Macau



Government of Macau

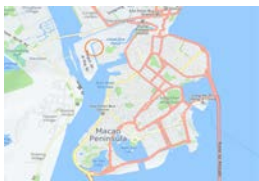


Designation

This project consisted of the construction of a border for vehicles and people including all check facilities and inspection of cargo and people.

Services Provided

Complete draft civil, structural and E&M.



3578

Land Reclamation, in Northwest of the Island of Taipa

MACAU - CHINA Taipa



Macau Government



Designation

Land reclamation, in northwest of the island of Taipa.

Services Provided

Design.



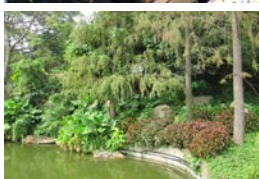
3649

Sun Lat Sen Garden

MACAU - CHINA Macau



Macau Government

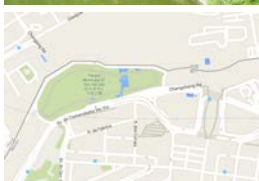


Designation

Sun Lat Sen Garden.

Services Provided

Design, supervision and construction management.



3648

Building and Planning (Infrastructures)

Mong Ha Garden

MACAU - CHINA Macau



Macau Government



Designation

Mong Ha Garden.



Services Provided

Design, supervision and construction management.

3647

New Land Reclamation, in Macau Island

MACAU - CHINA Macau



Macau Government



Designation

New land reclamation, in Macau island.



Services Provided

Supervision and construction management.

3646

New Garden "Art Garden"

MACAU - CHINA Macau



Macau Government



Designation

Garden "Art Garden".



Services Provided

Design and construction management.

3645

Building and Planning (Infrastructures)

Lot TN27 at Taipa

MACAU - CHINA Taipa



Macau Government



Designation

Lot TN27 at Taipa.



Services Provided

Infrastructures design.

3644

Floating Casino

MACAU - CHINA Macau



STDM
S.T.D.M.



Designation

Building to support the new location of the floating casino.



Services Provided

Design, supervision and construction management.

3643

Galaxy Cotai Public infrastructures

MACAU - CHINA Cotai



Macau Government



Designation

Galaxy Cotai public infrastructures.



Services Provided

Design.

3642

Building and Planning (Infrastructures)

Gasoline and Service Station at Z.A.P.E.

MACAU - CHINA Macau



STDM
S.T.D.M.



Designation

Gasoline and service station at Z.A.P.E.



Services Provided

Civil and E&M engineering design.

3641

"City of Dreams" infrastructures at Cotai

MACAU - CHINA Cotai



Macau Government



Designation

"City of Dreams" infrastructures at Cotai.



Services Provided

Design.

3640

West Channel Environment Protection, na ilha de Taipa

MACAU - CHINA Taipa



Macau Government



Designation

West channel environment protection, na ilha de Taipa.



Services Provided

Design.

3639

Building and Planning (Infrastructures)

Central Laboratory of Metrology Lisbon

PORTUGAL Almada



Portuguese Institute for Quality

Designation

IPQ Head Office and Lisbon Central Metrology Laboratory - Intervention area: 4,5 ha .

Services Provided

Detail design of the infrastructures (earth-works; roads; water, sewerage and electricity networks; gas network and storage).

1226

Açudes e Recuperação de Terras na Bacia Norte do Patane

MACAU - CHINA Macau



Macau Government

Designation

Dike and land reclamation in basin north Patane.

Services Provided

Design, supervision and construction management.

3637

The Campus of Quinta do Monte in Funchal

PORTUGAL Funchal



University of Madeira

Designation

Madeira University "Campus" - Intervention area: 30 ha.

Services Provided

Detail design of infrastructures (earth-works; roads; drinkable water, fire fighting and irrigation networks; domestic and rainy waste water networks; gas, energy and communications networks; public lighting).

1227

Building and Planning (Infrastructures)

Border Post of Portas do Cerco

MACAU - CHINA Macau



Government of Macau



Designation

This project consisted of the construction of a border for vehicles and people including all check facilities and inspection of cargo and people.

Services Provided

Supervision and management of contract.



3577

Border Post Cotai

MACAU - CHINA Cotai



Government of Macau



Designation

This project consisted of the construction of a border for vehicles and people including all check facilities and inspection of cargo and people.

Services Provided

Complete draft civil, structural and E&M, supervision and management of Contract.



3576

Water and Sewage Piping of Porto Amboim

ANGOLA Porto Amboim



CME

Designation

Installation of new water and sewage piping and construction of a sewage treatment facility (Sewage Treatment Station).

Services Provided

Proposal design, planning phase and tender phase.



3489

Building and Planning (Infrastructures)

Urbanization Infrastructures for Chaminé Village

PORTUGAL Montijo



NAMEX - Soc Investment Property Ltd.



Designation

Urbanization in Montijo with 156 houses occupying a total area of 2 ha.



Services Provided

Tender Project of landscaping, support walls, water lines regularization, water supply systems, sewage systems, gas system. Technical assistance.

3488

Tourist Development in "Herdade do Morgado do Reguengo"

PORTUGAL Portimão



IMOREGUENGO



Designation

Nucleus of tourist development with 988 ha, including 2 hotels, 3 condominiums and 2 golf courses.



Services Provided

Proposal design, planning phase, tender phase of all the specialties and geologic studies. Technical assistance.

3487

New Logistics Center of the Rapidão Cometa

BRAZIL Recife



Rapidão
Cometa
Rapidão Cometa



Designation

New Logistics Center.



Services Provided

Detail design.

3512

Building and Planning (Infrastructures)

Industrial Park "Sapec Bay"

PORTUGAL Setúbal



SAPEC - Industrial Parks



Designation

Industrial Park "Sapec Bay (400 ha).



Services Provided

Master plan; allotment plan; infrastructures detail design (earthworks, road network, potable water, fire-fighting water supply networks, rainy water drainage and sewage, power and outer lighting, communic. and gas storage); geotechnical survey.

3270

MARL - Facilities Loures

PORTUGAL Loures



MARL - Outfitter Market Lisbon Region



Designation

New facilities in Loures (110,000 sq.m).



Services Provided

Project general and specialty.

1335

Intervention Zone EXPO'98

PORTUGAL Lisboa



Parque EXPO 98, S A



Designation

Main road network and primary infrastructures for the EXPO'98 intervention zone, phase A (total area: 340 ha; enclosed space: 53,6 ha).



Services Provided

Technical gallery and preliminary study.

1234

Building and Planning (Infrastructures)

Industrial Park annexed to Autoeuropa

PORTUGAL Palmela



AUTOEUROPA (Automobiles)



Designation

Suppliers Industrial Park of the Ford/VW Car Factory - Intervention area: 35 ha.



Services Provided

Preliminary study and detail design of the infrastructures (earth-works and land modelling; roads; industrial, domestic and rainy waste water networks; gas network; LT and MT electrical networks; public lighting).

1233

Head Office and Laboratories of the DGA

PORTUGAL Alfragide



DGA (Directorate General for Environment)



Designation

Head Office and Laboratories of the DGA - Intervention area: 3,0 ha.



Services Provided

Detail design of the infrastructures (earth-works; roads; water and sewage networks; chemical sewerage treatment plant; geotechnical study).

1232

Land Reclamation near Hotel Mandarin

MACAU - CHINA Macau



Macau Government



Designation

Land reclamation near Hotel Mandarin.



Services Provided

Supervision and construction management.

3650

Building and Planning (Infrastructures)

"N. S. da Esperança" Bay, Environment Protection

MACAU - CHINA Taipa



Macau Government



Designation

"N. S. da Esperança" bay, environment protection, on the island of Taipa.



Services Provided

Design.

3638